

S
A
L
A
R
Y
E
S

RESUME GRANTS

Hiring Costs

Funeral Costs

S
P
O
R
T
S

Lawn Care

Volunteer Activities

Renovation Supplies

VEHICLE PURCHASES

UTILITIES

CLOTHING

MEDICATIONS & SUPPLIES

Religious observances

ARTS

Groceries

GASOLINE

MORTGAGES

Physician visits

OFFICE SUPPLIES

United Way Supporters

PRINTING

Furniture Purchases



Community Living

An Integral Partner

in our

Community

2011 Annual Report

VEHICLE MAINTENANCE

VETERINARIAN

SERVICES

PAPER

SHREDDING

Haircuts

STAFF TRAINING

Health Insurance

HOUSE

MAINTENANCE

Snow Removal

Removal

VACATIONS

SNO CONE TRAILER

IT SERVICES

COMMUNITY

As Community Living has grown over the years, so has our commitment to financially supporting Frederick County. From a handful of people at the start, CLI now supports more than 105 people. In addition, we have 150 staff whose wages help sustain the business community. Our growth has helped support numerous physicians, dentists, and other medical professionals. We purchase more than \$140,000 worth of goods from local grocery stores each year. New people to serve require homes where they can live. CLI chooses local contractors, who mow grass, shovel snow, replace aging windows, repair leaky toilets, and remodel kitchens to ensure our 26 houses are safe and comfortable. Our growth has necessitated growth in our vehicle fleet and the costs associated with keeping 30 vehicles on the road. One of our most important connections with our community is through the use of volunteers who strengthen the organization and its residents in numerous ways.



Contractors, who mow grass, shovel snow, replace aging windows, repair leaky toilets, and remodel kitchens to ensure our 26 houses are safe and comfortable. Our growth has necessitated growth in our vehicle fleet and the costs associated with keeping 30 vehicles on the road. One of our most important connections with our community is through the use of volunteers who strengthen the organization and its residents in numerous ways.

INNOVATION

Our Retirement Our Way (ROW) Program initially was designed to be a place where the elderly or medically fragile could go when their other day programs were no longer suitable for them.

Planned to be a place with multiple levels of activities, but still one where an afternoon nap was an option, ROW has now evolved into a program where people who don't fit the traditional day program model attend. The program has adapted with one to one coverage when appropriate, and work on learning how to become a part of a group is an everyday teaching lesson. Our many seniors are warm and accepting and the younger participants bring a zip to the steps of some of our older attendees.

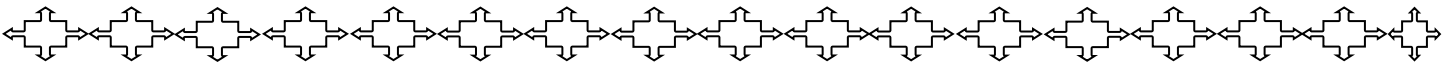
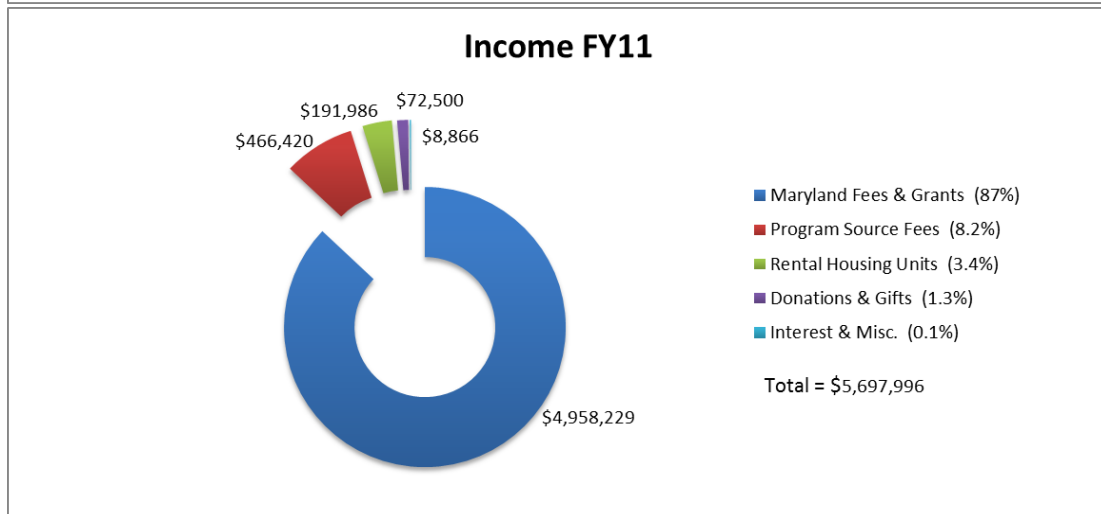
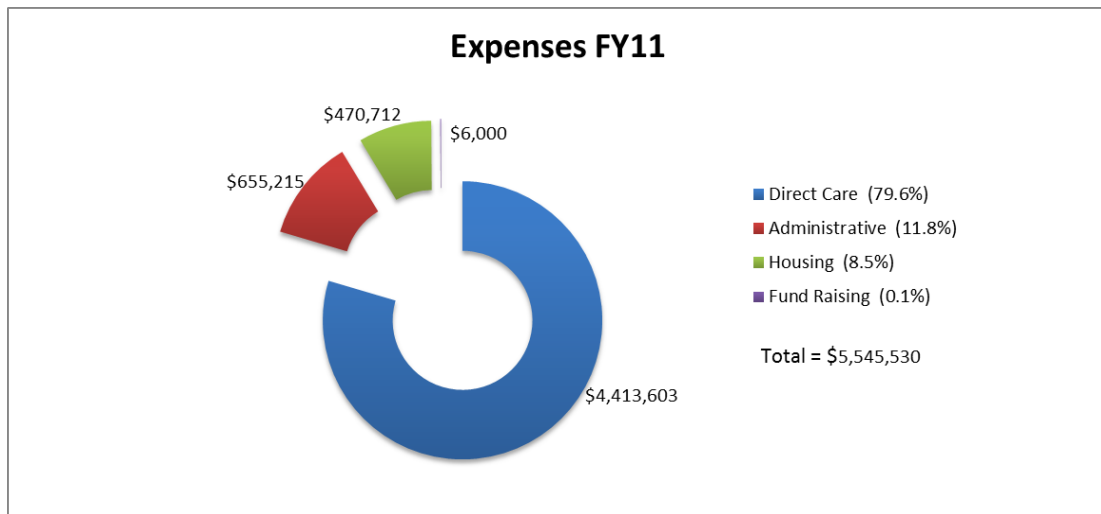


In 2011 CLI continued its commitment to sports with the people it serves. Through the generosity of a volunteer, many free tickets to Orioles and

COMMITMENT



Nationals games were enjoyed. This means that trips on the Metro were experienced as well! CLI can boast that over 50% of its members participate in some type of sport. We continue to play on a unified county wide kickball league, and CLI now has four bocce courts in back of the office. Our sporting ventures are on horseback, on snowshoes and in kayaks. The size of the ball varies from a golf ball to a softball to a bowling ball. Some evenings there are three and four events going and having access to a handicapped van is the only obstacle keeping it from being five or six events.



FY 2011 Donors

July 1, 2010-June 30, 2011

In Kind Donors

Nancy Adkins	Lisa Hildebrandt	Julie Schwarenzberg
Pam Ainsworth	Gregory Hill	Carol Schwartzback
Joanne Alspaugh	Life Technologies	Mari Segal
Lee Banks	Janet Lucia	Margo Smith
Margaret Britt	Janet Macik	Barbara Stastny
Mary Jane Brown	Sarah Matthews	State Farm
Christ Reformed United		Trinity United Lutheran
Church of Christ	Melanie Mulligan	Church
Melanie Cox	Patriot Technologies	THE Arc
Alma Dade	Nancy Pfeil	United Health Care
Elks Club	Bless Queen	Evelyn Wilcom
Lori Follmer	Devi Rameshan	Debbie Williams
Frederick Civitan Club	Joyce Robinson	Linda Wolfe
James Gangawere	Brian Salter	Marty Young
Linda Grove	Carlota Salter	

Thank you to these donors for gifts of household furnishings, appliances, personal items or gifts of time. There are many others that have given the people we serve countless acts of kindness and we thank them as well.

MEMORIALS

In Memory of Lavenia Marsh

Emily Jane Chamblee
Serene Collmus
Debbie Culler
Ellen Culler
James Filby
Linda Grove
Claudia Harrington
Robert Manthey

James McClellan
Nancy Molesworth
Pattie Naille
Francis Patterson
Eric Perine
Mary C. Poole
Charles and Nancy Rickman
Mary C. Willard

In Memory of Arlen Detrow

John Bartles

In Memory of Donald Long

Gerald Baker
Jean and Kim Doyle
Mary Ann Turney
Alice Jean Stine

DONATIONS

\$5,000 & over

City of Frederick
Joseph Baker Foundation
MAHT

\$1,000 to \$4,999

Ellis Barber
PSA Financial
Carlota Salter
Siemens Caring Hands
J. Bernard Vallandingham

\$500 to \$999

Calvary United Methodist Church
William Clow
Robert Deluliis
Henry Groff
Gregory Hill
Ed and Susan Holton
Robert Hughes
Lions Club of Frederick
Ronald Long
Julia and Walter Morrison
Floyd Rogers

\$200 to \$499

All Shred
Jane Armbrust
Blank Bothers, Inc.
BroadRun Construction
Marilyn Dolbeare-Mathews
Emergency Physician Associates
David Goldman
Ridgely Hill
Ed & Nancy Ocker
Larry & Pam Schaffert

David & Ron Schattenburg
Marjorie Smyth
St. John the Evangelist Church
Wasserbach Family

Up to \$199

Gerald & Shirley Baker
Nevin Baker
Patricia Barbarowicz
Karin Belsheim
Orville Bowersox
Regina Clark Crone
Walter Eiker
Terry Fawley
James Gangawere
Carolyn Gastley
John George
Vera Gerovac
Catherine and Lloyd Graf
Phil & Betty Green
John Griffin
Debora Hagwood
Randi Hill
Winifred Hiltner
Karen and Greg Hull
Jefferson Street Service Center
Harold Keller
Coralinn Kuehl
Richard Kreh
Donald & Rebecca Linton
Terrence Lee
Ron Linton
Harvey Levy
Chanda Loudan
Fannie Mae
Stephanie Mance

Rala Mandelson
Maryland Motor Truck Association
Robert Manthey
Sarah Matthews
Bev McCardle
Norman and Joanne Minich
Jane Moore
Fred & Marty Myers
Ronnie Osterman
A.G. Pecora
Susan Phelps
Tim Phillips
Michael Planz
Linda Powell
Andy & Cheryl Radcliffe
Lee Radcliffe
Terre Rhoderick
Kathy Rohrer
Mary Ann Schindel
Thomas Schultze
Virginia Shaw
Mari Segal
David & Sandra Smith
Harold Staley
Barbara Stastny
Al Taylor
Kenneth Thompson
Lorijean Turner
United Way of Central MD
The Wireless Alliance
Teresa Verdin
Scott Wooton
James Yonetz
Marty Young